



# RUBBERLINE

**Rubber Technology - Designed and Produced In-House**



# RUBBERLINE

Abatek stands for **professionalism** and **experience** in the rubber industry offering **100% In-House** services since 1992.



Abatek operates its **own mixing** plant and manufactures in accordance with all common **production technologies** plus **state of the art tooling**.

This enables the production of **complex products** made of materials that are precisely customised to your requirements.

- CR - Chloroprene Rubber
- EPDM - Ethylen-Propylen-Diem Rubber
- FVMQ - Fluor-Silicone Rubber
- HNBR Hydro-Nitrile-Butadien Rubber
- NR - Natural Rubber
- NBR - Nitrile-Butadien Rubber
- SBR - Styrol-Butadien Rubber
- VMQ - Silicone Rubber
- and more



Naturally in compliance with the **highest quality** standards like IATF16494, ISO 14001 and ISO 9000/9001/9004.





# SEAL / GASKET

For over twenty years Abatek manufactures custom seals mainly for automotive but also other industries.

In addition to traditional custom rubber gaskets, Abatek - being a material expert - can also support you with **thermal** or **electrically** conductive materials.

An exiting speciality are lubricated seals with “**zero bleeding**” and **stable compression set** over lifetime!



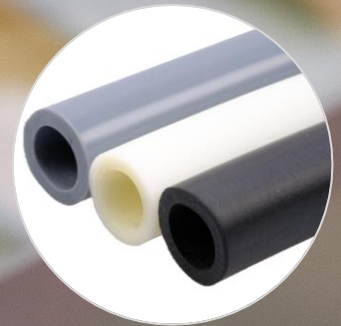


# PROFILE / TUBE

Profiles and tubes can be manufactured by Abatek in an **extensive range** of hardnesses and colors including:

- 1K / 2K rubbers
- High & low temperature grades
- Electrically conductive
- Flame retardant components
- Temperature conductive or insulating compounds

Because of the in-depth tool know-how of Abatek seemingly **complex designs** are feasible.



# BELLOWS

Abatek agrees: The proper bellow more than often represents the **“make or brake”** for the application.

Thus the Abatek in depth process **know how** makes an almost unlimited number of variants regarding sizes & shapes of flanges possible.

Fortunately the combination of different materials for different applications opens **interesting technical options**.



# GROMMETS / CABLE GLANDS

Abatek manufactures **customized** grommets for - literally - **ALL** industries and applications!

The design and production of compression and injection molded grommets in all configurations and shapes also includes irregular or “oddly shaped” parts.

The selection of the most **suitable** rubber including food and medical grade materials ensures **highest quality**.





# COVER

Surface “**protection**” has become one dimension richer and more important than ever!  
Abatek offers **safety** for over-molded parts with elastomer!

Through **fully In-House** developed coatings called *SealPlast*, *PearlPlast* and *SatinPlast* the **best abrasion resistance** in the market is achieved!

**Functions** such as backlights, dead front and tactile electrical contacts can be easily implemented or added.



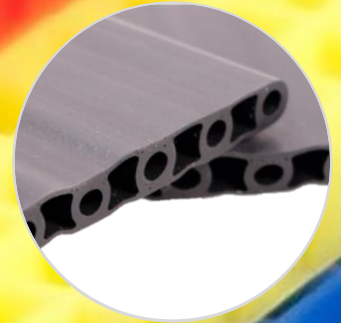
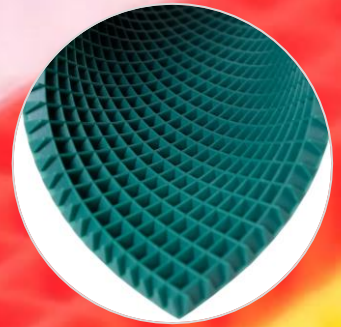
# ECD MATT / TUBE

A **unique** Elastic Compression Damping system developed by Abatek which combines **several tasks** in one product.

The elasticity and damping of the **customised** ECD mat can be **adjusted** as desired which provides the best technical results over the entire **lifetime!**

Amongst many other potential areas of use:

A unique customisable preload and damping systems for e-vehicle battery packs, LIDAR sensors, cameras for example.





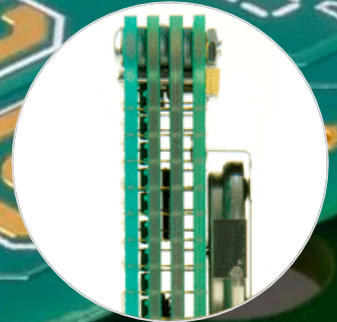
# DAMPER-SPACER

The Abatek Damper-Spacer – also available in tape reel – **unites** numerous technical advantages **into ONE part!**

It can be customised according to your wishes regarding design, hardness & colour.

By using conductive material it additionally serves as ESD protection.

Plus it is automated SMT placeable and additional components like adhesive, screws or springs are NOT needed.

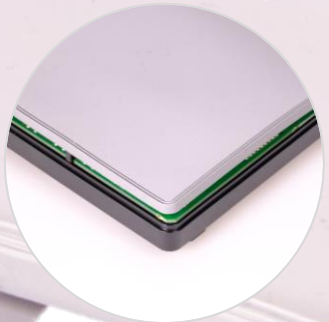


# ABA-SHIELD

The Abatek EMI Shield is a material with a variety of **effective functions**.

Mainly it **protects** sensitive electronics from dirt and liquids. In addition it **shields** the components from electromagnetic interferences.

This combination allows for **electronical AND physical shielding** even of complex shapes.



# EL. CONDUCTIVE POLYMERE

Electrical Conductive Polymere has many fields of application.

On one hand it allows the **precise** design for connection or flow / **discharge** of electronical charges. On the other hand an **electrical function** can be created over a large area or at specific points.

Safety systems, capacitive solutions, ESD protection and LIDAR are just a few application examples.



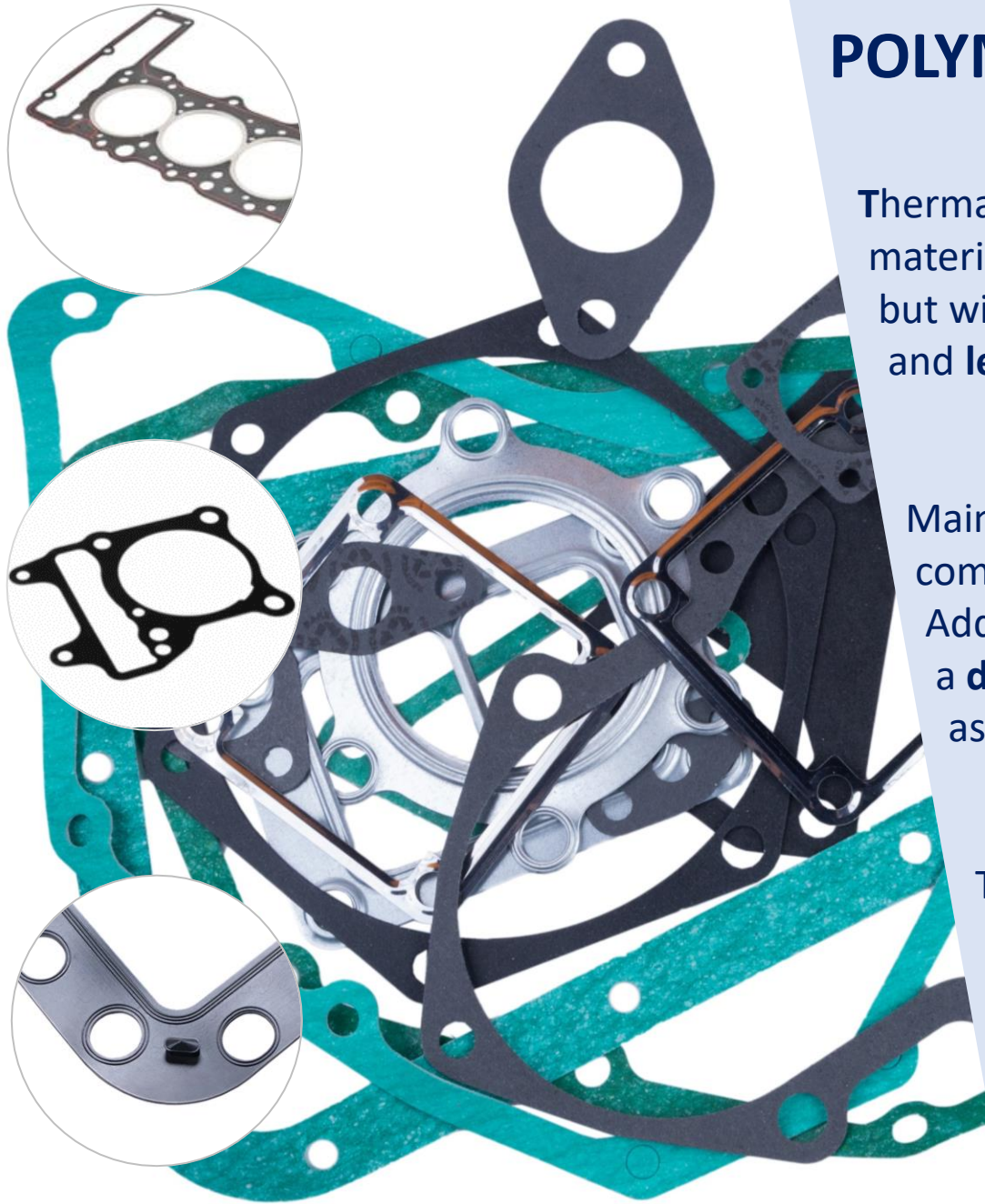


# THERMAL CONDUCTIVE POLYMERE

Thermal Conductive Polymere is a material which **dissipates** heat but with greater design freedom and **less weight** than other solutions.

Mainly it **protects** heat sensitive components from **overheating**. Additionally it can either be used as a **damping** system or alternatively as a **sealing** part.

The material is moldable.  
Meaning: there is more **design freedom** for complex seals & profiles.

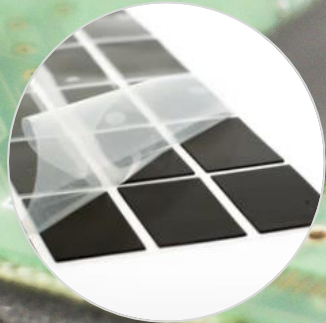


# THERMALPAD

A customized flexible & extremely soft **silicone** or **acrylic** pad with optional 2 side adhesive.

It transfers heat from components like CPU or IC to a heat sink or metal case, has great heat stability and is fire resistant.

In addition Thermal Pad also works as a distance keeper/cushion protecting electronic devices and other shock sensitive components.





# CO-& OVER-MOLDING

The Abatek Co-molding expertise allows for different components to be finalized in one step. Even if consisting of several elements or made of different materials.

In-House quality guaranteed!

- Elastomer - Plastic
- Elastomer – Metal
- Plastic - Metal

Over-molding guarantees excellent adhesion between different materials and eliminates the need for their manual assembly.





# FOAM / SPONGE

Abatek as **material specialists** offer customized foam & sponge rubber made of Poron, EPDM, silicone - plus a wide range of other elastomers.

The crucial differences between sponge and foam rubber are ingredients and manufacturing methods

For sponge rubber we offer open-cell, closed-cell and silicone variants.

From purchase to delivery: every step is managed In-House by our **expert teams**.

This not only ensures the most suitable part for every application. It stands for a **secure, sustainable** and ethical supply chain.



**Material expertise  
In-House tool shop  
In-House production**

**All this makes the Abatek RubberLine special**

# WELCOME!



**Sales Europe:**

Abatek International AG  
Grindelstr. 12  
CH-8303 Bassersdorf (Zurich)  
Switzerland

Phone: +41 44 843 11 11  
Fax: +41 44 841 11 12  
[saleseurope@abatek.com](mailto:saleseurope@abatek.com)



**Sales America:**

Abatek (Americas), Inc.  
2855 Premiere Parkway  
Suite B  
Duluth, Ga 30097  
USA

Phone: +1 678 684 54 00  
Fax: +1 678 684 5428  
[salesamericas@abatek.com](mailto:salesamericas@abatek.com)



**Sales Asia:**

Abatek (Asia), PCL.  
946 Export Processing Zone  
Bangpoo Industrial Estate  
Samutprakarn 10280  
Thailand

Phone: +66 2 729 9100  
Fax: +66 2 729 9101  
[salesasia@abatek.com](mailto:salesasia@abatek.com)

